



- A link detached bungalow located in a much sought after location
- In need of general updating throughout
- Lounge with patio doors opening onto the rear garden
- Kitchen dining room with window overlooking garden and door to side path
- Two double bedrooms and shower, gas central heating
- Private drive, garage and fully enclosed garden backing onto countryside



"A link detached bungalow, located in a quiet and much sought after location which backs onto open countryside".

A central entrance has doors to a lounge with fireplace and patio doors opening onto the rear garden. The kitchen dining room has ample space for a dining table, window overlooking the rear garden and door to side path which leads to front and back. There are two double bedrooms and a shower room. Mains gas central heating and partial double glazing. Outside to front is a private drive which approaches the connected garage. To the rear is a fully enclosed and very private garden, the garden backs onto countryside. The garage has power and lighting, up and over door to front and glazed panel door into garden. General updating is required throughout.

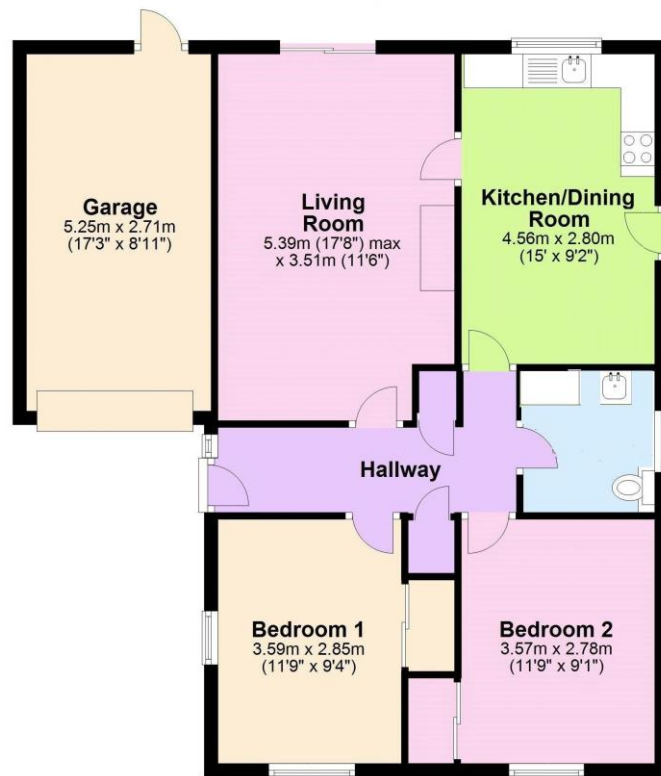
Tenure: Freehold

Council Tax Band: D



Ground Floor

Approx. 81.8 sq. metres (880.7 sq. feet)



Plan produced using PlanIQ.
The information contained in this document is for general information only and does not constitute an offer of any financial product or service. It is the purchaser's responsibility to verify the accuracy of the information and to ensure that it meets their requirements. The information is provided on an 'as is' basis and the provider does not accept any liability for any loss or damage arising from its use.

Find us online!



www.samchiversproperty.co.uk



Facebook: Sam Chivers Estate Agents



Instagram: @samchiversestateagents

rightmove  Zoopla

Sam Chivers Estate Agents can also provide mortgage and conveyancing recommendations should you require such a service. Please contact our office on:

01761 411020 or email us at sales@samchiversproperty.co.uk

These sales particulars provide an approximate guide and form no part of a contract. It is the purchaser's responsibility to satisfy themselves that the property has been accurately described and that all fixtures and apparatus are functioning correctly. Your home may be at risk if you do not keep up repayments secured against it.